

# ADVANCED DIPLOMA IN ART AND REPRODUCTIVE MEDICINE

BY UNIVERSITY OF SCHLESWIG-HOLSTEIN- KIEL, GERMANY

DECEMBER 01 - 05, - 2023 - ONLINE

## Highlights Of The Course

Explanatory slides  
Descriptive videos  
Inter session discussions  
Stimulation protocol  
Sessions of query clearance  
Evaluation Examination  
Certification

**UK  
SH**

UNIVERSITÄTSKLINIKUM  
Schleswig-Holstein

KIEL SCH•OL

**A E  
C S**

ALL & EVERYWHERE  
CONFERENCES & SEMINARS

## COURSE DIRECTORS & FACULTY



Prof. Liselotte  
Mettler  
Germany



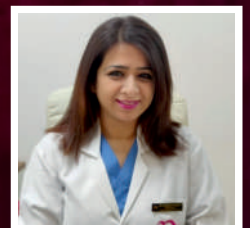
Dr. Meenu  
Agarwal  
India



Dr. Karunakar  
Marikinti  
India



Dr. Khaldoun  
Sharif  
Jordan



Dr. Sulbha Arora  
India

**5 DAYS ONLINE COURSE - EVERY DAY UAE TIMEZONE 4:00pm to 8:00pm**

## COURSE CONTENTS

- How did ART improve over the last 50 years??
- One Stop Infertility Service & 3D TVS in ART
- Down Regulation- state of the art in ART
- IVF: When to do and when not to do..?
- Live Procedures from the Operating Room Hysteroscopy before IVF, Live OPU, ET under USG Guiding, Video for Tesa / Pesa (Subject to availability of the cases)
- Essentials in controlled Ovarian Super Ovulation with protocols on ovulation induction
- Complication of Ovarian Stimulation Prevention and Management
- Different types of Agonist Protocols, Antagonist Protocols when and where to use
- Applied Endocrinology in ART
- Hysteroscopy in ART

- Social Freezing and Fertility preservation options an overview - including specifications on vitrification.
- Tricks for the improvement of Follicular Puncture (FP), Embryo Transfer (ET) and Support of Corpus Luteum Phase (CLP)
- Surgical Interventions before ART
- Egg collection and Embryo Transfer Made Easy
- Principles of Congenital anomalies (adhesions, septum, uterus bicorn is, Roberts Uterus) Detection and Treatment
- USG in Infertility and Follicular monitoring in IUI / IVF Cycles
- Assisted Conception for women with PCO/PCOS
- The life of a good egg- from oocyte to blastocyst
- Understanding the IVF lab and how it is measured
- The basic semen analysis and beyond. How does this direct patient care?

## REGISTRATION / QUERIES

- ✉ info@aecsmed.com
- 🌐 www.aecsmed.com/registration
- ☎ +971 55 532 2030 / +971 52 352 0165
- 📞 +971 4513 6400



## COURSE FEE

**AED 2000 (USD 545)**

Special discount for Group of Doctor's