

DIPLOMA IN GYNECOLOGICAL ENDOSCOPY AND REPRODUCTIVE MEDICINE

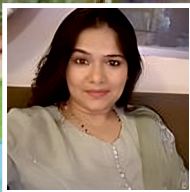
BY UNIVERSITY OF KIEL SCHLESWIG-HOLSTEIN- KIEL, GERMANY

JULY 10 - 13, 2024 / DMIHER UNIVERSITY SAWANGI (MEGHE) WARDHA MAHARASHTRA

PRACTICAL HANDS-ON WORKSHOP
LIVE SURGERIES FROM THE O.T



Prof. Liselotte Mettler



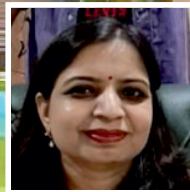
Dr. Neema Acharya



Dr. Meenu Agarwal



Dr. Karunakar Marikin



Dr. Deepti Shrivastava



Dr. Mrugesh Patel



UNIVERSITÄTSKLINIKUM
Schleswig-Holstein

KIEL SCHOOL
of Gynaecological Endoscopy



DATTA MEGHE
INSTITUTE OF HIGHER
EDUCATION & RESEARCH

Live Surgery: TLH, Myomectomy, Submucosal Fibroid Resection etc...,

Content For Gynecological Endoscopy

- ❖ Safe Entry - Surgeon's Arrhythmias at Primary Port Insertion
- ❖ Laparoscopy Subtotal and Total Hysterectomies (LSH and LTH)
- ❖ A Systematic Approach to Total Laparoscopic Hysterectomy – Avoid to Dig Holes! A Video Presentation
- ❖ Laparoscopic Management of Deep Endometriosis Including Uterolysis, Para Rectal Dissection – Video Lecture
- ❖ Laparoscopy Myomectomy, Morcellation and Limits, Where We Are Today...?
- ❖ The Holy Grail of Laparoscopic Surgery – Intracorporeal Suturing – Step by Step Video

Content For Reproductive Medicine

- ❖ Stimulation on Protocols of OPD Patients Discussion
- ❖ USG for ART and IUI Patients
- ❖ Hands on OPU
- ❖ Hands on Semen Washing
- ❖ Discussion and Hands on IUI Procedure
- ❖ Hysteroscopy Hands On
- ❖ Hysteroscopic PRP Observa on
- ❖ Discussion and Live Demo of Hycosy Procedure
- ❖ Hands On Denuda on of Oocytes
- ❖ Live Demo of Freezing, Vitrifica on and Warming of Gametes and Embryos
- ❖ Live Demo and Tips and Tricks of ICSI
- ❖ TESA PESA TESE Microtese Demonstra on on Patient

This 4 days program shall be taught by trainers using dry and wet tissue conditions and Live Surgeries From the O.T. We use real time training equipments and demonstration of all essentials and laparoscopic procedures.

REGISTRATION / QUERIES

- ✉ info@aecsmed.com
- 🌐 www.aecsmed.com/registration
- ☎ +971 55 532 2030 / +971 52 352 0165
- ☎ +91 93266 92511 (DR. Neema Acharya)



COURSE FEE

INR 1,65,000 (USD 2000)

Special discount will be offered for a group of doctors (Non-refundable fee for cancellation within 30 days of the course, 10% administrative charges will be deducted for earlier refund)