

Advanced Diploma in ART and Reproductive Medicine

BY UNIVERSITY OF SCHLESWIG-HOLSTEIN- KIEL, GERMANY

FEBRUARY 09 - 13, - 2022 - ONLINE



UNIVERSITÄTSKLINIKUM
Schleswig-Holstein

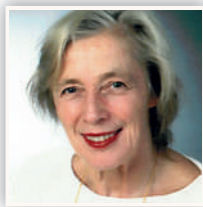
LIVE PROCEDURES FROM O.T

- ✓ Live Demonstration of Hysteroscopy before IVF
- ✓ IVF Instruments and Equipment's
- ✓ Live OPU
- ✓ Embryo transfer under USG Guidance
- ✓ TESA (Testicular Sperm Extraction) Procedure
- ✓ PESA (Percutaneous Epididymal Sperm Aspiration) Procedure

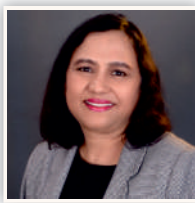
HIGHLIGHTS OF THE COURSE

- ✍ Explanatory slides
- ✍ Descriptive videos
- ✍ Inter session discussions
- ✍ Stimulation protocol
- ✍ Sessions of query clearance
- ✍ Evaluation Examination
- ✍ Certification

5 DAYS ONLINE COURSE - EVERY DAY UAE TIMEZONE 3:00pm to 7:30pm



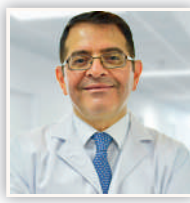
**Prof. Liselotte
Mettler
Germany**



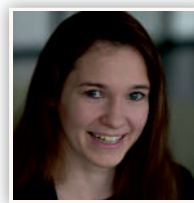
**Dr. Meenu
Agarwal
India**



**Dr. Karunakara
Marikinti
UK**



**Dr. Khaldoun
Sharif
Jordan**



**Dr. Cristina
Hickman
UK**



**Dr. Rishma
Dhillon
India**

COURSE CONTENTS

- How did ART improve over the last 50 years??
- One Stop Infertility Service & 3D TVS in ART
- Down Regulation- state of the art in ART
- IVF: When to do and when not to do..?
- Live Procedures from the Operating Room Hysteroscopy before IVF, Live OPU, ET under USG Guiding, Video for Tesa / Pesa (Subject to availability of the cases)
- Essentials in controlled Ovarian Super Ovulation with protocols on ovulation induction
- Complication of Ovarian Stimulation Prevention and Management
- Different types of Agonist Protocols, Antagonist Protocols when and where to use
- Applied Endocrinology in ART
- Social Freezing and Fertility preservation options an overview - including specifications on vitrification.
- Hysteroscopy in ART
- Tricks for the improvement of Follicular Puncture (FP),
- Embryo Transfer (ET) and Support of Corpus Luteum Phase (CLP)
- Surgical Interventions before ART
- Egg collection and Embryo Transfer Made Easy

- Principles of Congenital anomalies (adhesions, septum, uterus bicorn is, Roberts Uterus) Detection and Treatment
- USG in Infertility and Follicular monitoring in IUI / IVF Cycles
- Assisted Conception for women with PCO/PCOS
- The life of a good egg- from oocyte to blastocyst
- Understanding the IVF lab and how it is measured
- The basic semen analysis and beyond. How does this direct patient care?
- Tricks for the improvement of Follicular Puncture (FP),
- Embryo Transfer (ET) and Support of Corpus Luteum Phase (CLP)
- Surgical Interventions before ART
- Egg collection and Embryo Transfer Made Easy
- Principles of Congenital anomalies (adhesions, septum, uterus bicorn is, Roberts Uterus) Detection and Treatment
- USG in Infertility and Follicular monitoring in IUI / IVF Cycles
- Assisted Conception for women with PCO/PCOS
- The life of a good egg- from oocyte to blastocyst
- Understanding the IVF lab and how it is measured
- The basic semen analysis and beyond. How does this direct patient care?

REGISTRATION / QUERIES

- ✉ info@aecsmed.com
- 🌐 www.aecsmed.com/registration
- ☎ +971 55 532 2030 / +971 50 439 8837
- ☎ +971 4513 6400



COURSE FEE

AED 1750 (USD 475)

Special discount for Group of Doctor's